

August 16, 2021

Eric Staley
Managing Director
SCIND FALLBROOK POINT, LLC
1150 Santa Monica Boulevard, Suite 700
Los Angeles, California 90067

Subject: Tree Inventory Report for the Fallbrook Point Project Site, West Hills, California

Dear Mr. Staley:

Psomas is pleased to provide this tree inventory report for the Fallbrook Point Project site located northwest of the intersection of Roscoe Boulevard and Fallbrook Avenue in the community of West Hills in the City of Los Angeles (Exhibit 1). The purpose of the tree inventory is to support the environmental assessment of the proposed Project by documenting the type, quantity, and condition of trees on the Project site that are subject to regulation by the City of Los Angeles (City) and to determine the quantity of trees that will be removed.

SITE AND PROJECT DESCRIPTION

The 7.01-acre Project site contains a surface parking lot that is located southeast of an office building located at 22801 Roscoe Boulevard. The parking lot contains trees in concrete planters that separate rows of parking along with landscaped areas along the site's southern, eastern, and northern boundaries. No street trees are located in the vicinity of the Project site in the public right-of-way along Roscoe Boulevard or Fallbrook Avenue. The proposed Project involves the construction of three new buildings and adjacent parking areas.

REGULATORY AUTHORITY

To support the environmental assessment for a proposed project, the City requires a report that identifies the location of the following:

1. Trees that are designated as "protected" as defined by Section 17.02 of the City of Los Angeles Municipal Code (City Tree Ordinance) that have at least one trunk with a diameter at breast height (dbh) of at least four inches. This category includes oak trees (*Quercus* spp.), Southern California black walnuts (*Juglans californica*), western sycamores (*Platanus racemosa*), and California bay laurels (*Umbellularia californica*). Two native shrub species, toyon (*Heteromeles arbutifolia*) and Mexican elderberry (*Sambucus nigra* ssp. *caerulea* [= *S. mexicana*]), have been recently added to the City Tree Ordinance.
2. Any non-protected trees that have a trunk dbh of at least eight inches.

225 South Lake Avenue
Suite 1000
Pasadena, CA 91101

Tel 626.351.2000
Fax 626.351.2030
www.Psomas.com

Mr. Eric Staley
 August 16, 2021
 Page 2

METHODS

Psomas Certified Arborist David Hughes (International Society of Arboriculture Certificate No. WE-7752A) visited the Project site on April 29 and 30, 2021 to document the type, quantity, and condition of trees on the Project site. All trees within and immediately adjacent to the Project boundary that meet the minimum size requirements described above were included in the tree inventory. Each tree was individually numbered, and the trunk, branches, and foliage were examined. During the site visits, the following data were recorded: tree species, trunk dbh, tree height, and canopy width. The health and aesthetic quality of each tree was assessed on a scale of 1 (very poor) to 5 (excellent).

The health evaluation generally considered visual evidence of vigor, such as the amount of foliage; leaf color and size; presence of branch or twig dieback; severity of insect infestation; the presence of disease; heart rot; fire damage; mechanical damage; amount of new growth; appearance of bark; and rate of callous development over wounds. Structural integrity was also evaluated with respect to branch attachment, branch placement, root health, and stability. Tree aesthetics were evaluated with respect to overall form and symmetry, crown balance, branching pattern, and broken branches.

RESULTS

A total of 163 trees were documented during the site survey, all of which occurred on the Project site (i.e., no trees occurred on the periphery of the site in the public right-of-way). None of the trees on the Project site meet the definition of a “protected” tree species as described in the City Tree Ordinance. A summary of trees on the Project site is provided below in Table 1 and tree locations are presented in Exhibit 2.

**TABLE 1
 SUMMARY OF PROPOSED TREE REMOVALS**

Tree Species	Tree Quantities			Range of Trunk DBH (inches)*
	Total Existing	To Be Removed	Protect In Place	
pecan <i>Carya illinoensis</i>	1	1	0	9.1
common catalpa <i>Catalpa bignonioides</i>	4	4	0	8.8 – 31.3
carob <i>Ceratonia siliqua</i>	8	8	0	18.7 – 35.6
blue gum <i>Eucalyptus globulus</i>	1	1	0	25.7
Raywood ash <i>Fraxinus angustifolia</i>	17	6	11	8.8 – 28.9
silk oak <i>Grevillea robusta</i>	1	0	1	17.6
juniper <i>Juniperus sp.</i>	2	0	2	21.3 – 22.7
Chinese flame tree <i>Koelreuteria bipinnata</i>	15	13	2	8.3 – 13.3
crape myrtle <i>Lagerstroemia indica</i>	3	3	0	11.1 – 12.5
glossy privet <i>Ligustrum lucidum</i>	3	3	0	8.2 – 15.3
American sweetgum <i>Liquidambar styraciflua</i>	1	1	0	12.6

Mr. Eric Staley
 August 16, 2021
 Page 3

**TABLE 1
 SUMMARY OF PROPOSED TREE REMOVALS**

Tree Species	Tree Quantities			Range of Trunk DBH (inches)*
	Total Existing	To Be Removed	Protect In Place	
Brisbane box <i>Lophostemon confertus</i>	1	0	1	14.7
Aleppo pine <i>Pinus halepensis</i>	10	9	1	16.9 – 41.0
London plane <i>Platanus X hispanica</i>	35	35	0	8.1 – 11.8
flowering pear <i>Pyrus kawakamii</i>	4	3	1	11.4 – 15.8
holly oak <i>Quercus ilex</i>	5	3	2	9.6 – 37.5
Brazilian pepper <i>Schinus terebinthifolius</i>	7	5	2	10.9 – 31.6
Chinese elm <i>Ulmus parviflora</i>	14	14	0	8.2 – 17.5
Mexican fan palm <i>Washingtonia robusta</i>	30	22	8	16.0 – 24.0
unidentified	1	0	1	22.8
Total	163	131	32	

*The DBH for trees that are multi-trunk trees are represented as the sum of the largest two trunks.

Based on the proposed Project’s construction plans, 131 trees will be removed for Project implementation. Several trees along the southern project boundary will be avoided during construction activities. Exhibit 3 illustrates the trees that will be removed for Project implementation.

A complete summary of the tree data that were collected during the field evaluation is provided in Attachment A. Representative photos of Project site conditions are provided in Attachment B.

Trees in the survey area are generally in average to good health without significant health problems. A significant exception is tree number 49; this tree is in very poor health and had only a few leaves near the top of the canopy that could not be sufficiently examined to determine the species.

Mr. Eric Staley
August 16, 2021
Page 4

Please call David Hughes at 626.204.6530 with any questions related to this report.

Sincerely,

P S O M A S

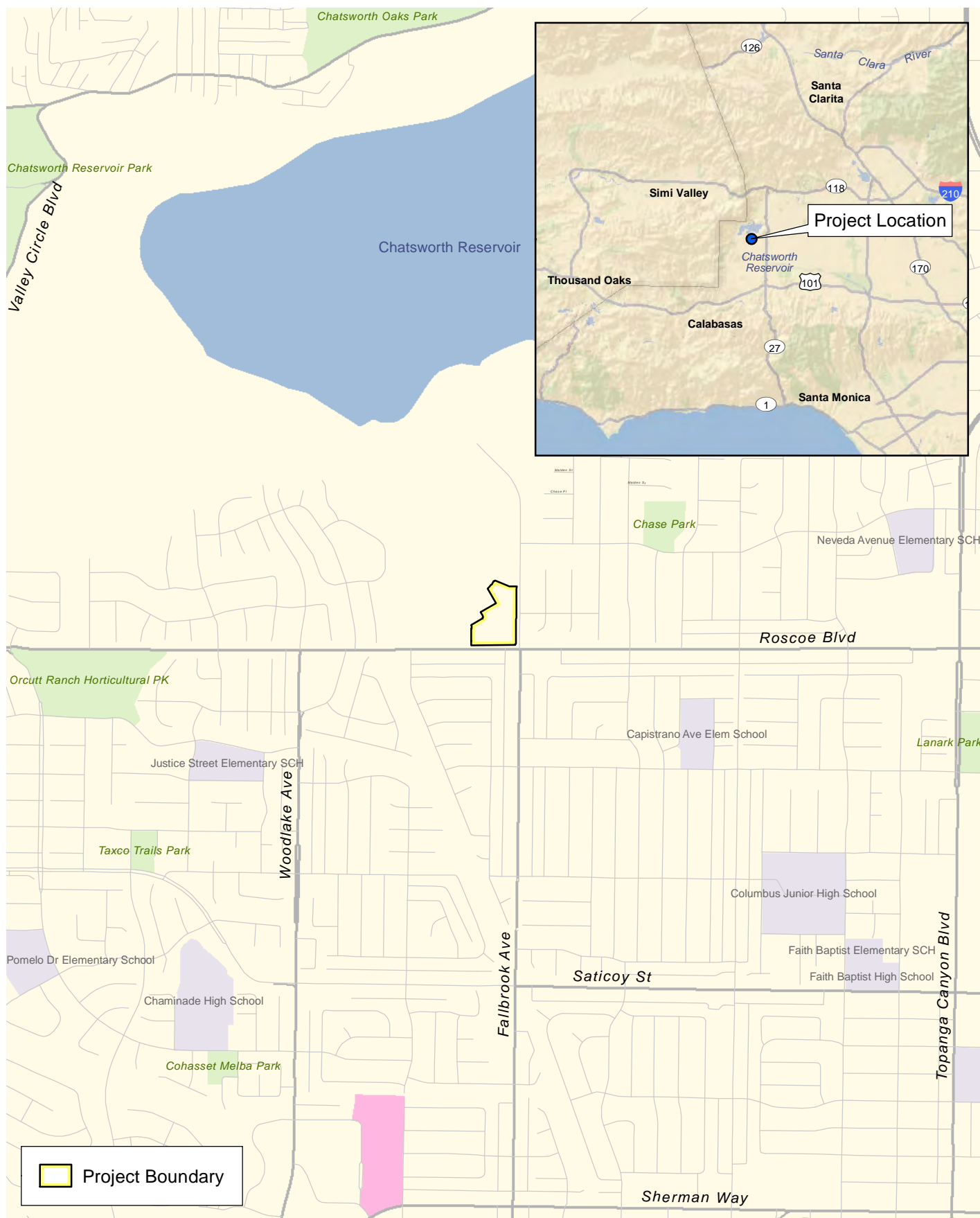


Ann M. Johnston
Principal, Resource Management




David T. Hughes
Certified Arborist
International Society of Arboriculture
Certificate No. WE-7752A

Attachments: Exhibits 1, 2, and 3
A – Tree Data Summary
B – Site Photographs



D:\Projects\1\SC\101000\MXD\Treelex_LV_20210512.mxd

 Project Boundary

Local Vicinity

Tree Inventory Report for the Fallbrook Point Project Site, West Hills, California

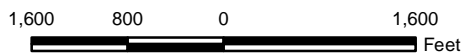


Exhibit 1



D:\Projects\1SC\101000\MXD\Treelex_TreeLocations_20210512.mxd

Project Boundary

Trees Species

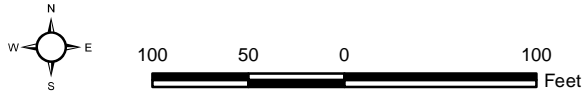
- pecan (*Carya illinoensis*)
- common catalpa (*Catalpa bignonioides*)
- carob (*Ceratonia siliqua*)
- blue gum (*Eucalyptus globulus*)
- Raywood ash (*Fraxinus angustifolia*)
- silk oak (*Grevillea robusta*)
- juniper (*Juniperus sp.*)
- Chinese flame tree (*Koelreuteria bipinnata*)
- crape myrtle (*Lagerstroemia indica*)
- glossy privet (*Ligustrum lucidum*)
- American sweetgum (*Liquidambar styraciflua*)
- Brisbane box (*Lophostemon confertus*)
- Aleppo pine (*Pinus halepensis*)
- London plane (*Platanus X hispanica*)
- flowering pear (*Pyrus kawakamii*)
- holly oak (*Quercus ilex*)
- Brazilian pepper (*Schinus terebinthifolius*)
- Chinese elm (*Ulmus parviflora*)
- Mexican fan palm (*Washingtonia robusta*)
- unidentified



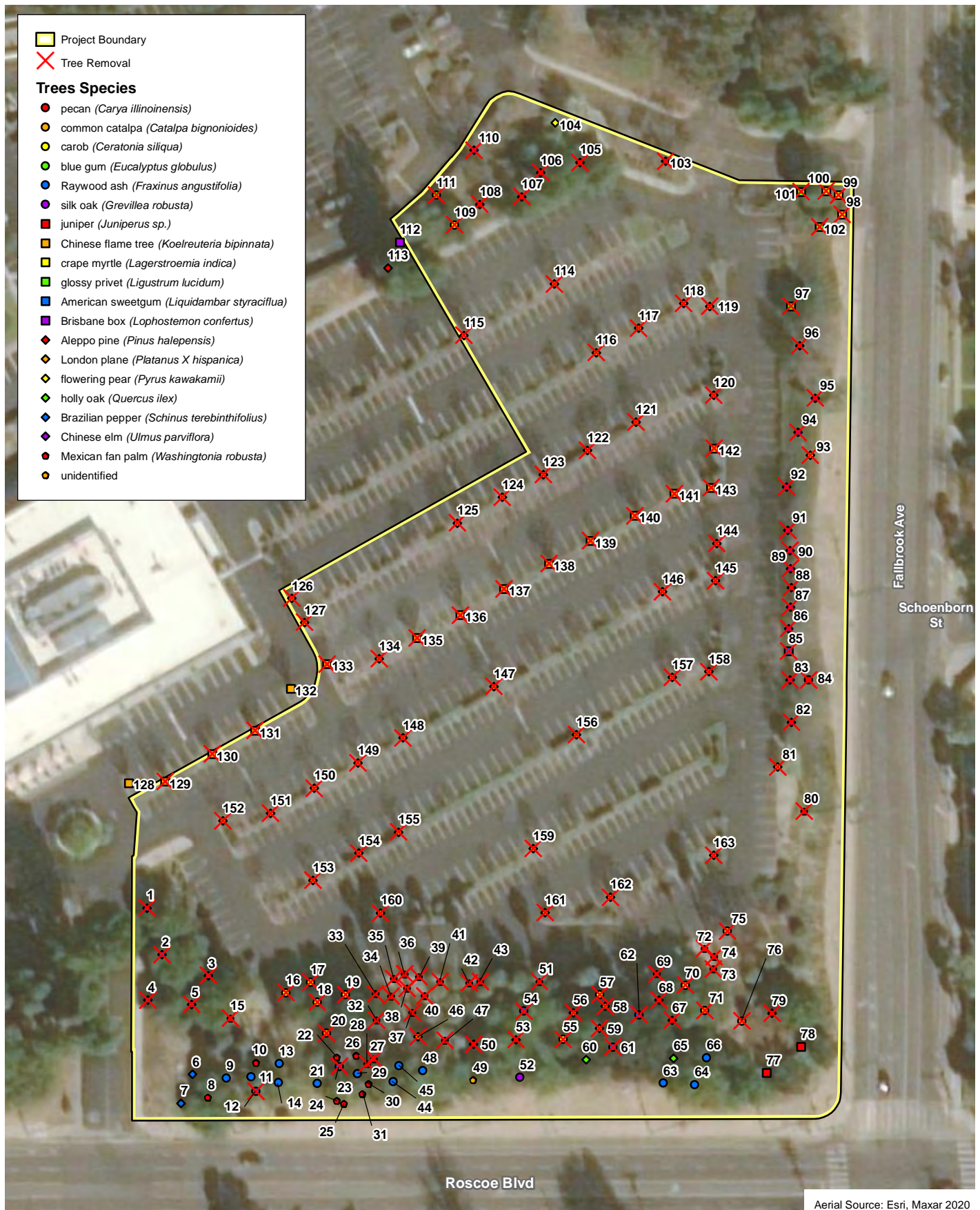
Tree Locations

Exhibit 2

Tree Inventory Report for the Fallbrook Point Project Site, West Hills, California



- Project Boundary
 - ✕ Tree Removal
- Trees Species**
- pecan (*Carya illinoensis*)
 - common catalpa (*Catalpa bignonioides*)
 - carob (*Ceratonia siliqua*)
 - blue gum (*Eucalyptus globulus*)
 - Raywood ash (*Fraxinus angustifolia*)
 - silk oak (*Grevillea robusta*)
 - juniper (*Juniperus sp.*)
 - Chinese flame tree (*Koelreuteria bipinnata*)
 - crape myrtle (*Lagerstroemia indica*)
 - glossy privet (*Ligustrum lucidum*)
 - American sweetgum (*Liquidambar styraciflua*)
 - Brisbane box (*Lophostemon confertus*)
 - ◆ Aleppo pine (*Pinus halepensis*)
 - ◆ London plane (*Platanus X hispanica*)
 - ◆ flowering pear (*Pyrus kawakamii*)
 - ◆ holly oak (*Quercus ilex*)
 - ◆ Brazilian pepper (*Schinus terebinthifolius*)
 - ◆ Chinese elm (*Ulmus parviflora*)
 - Mexican fan palm (*Washingtonia robusta*)
 - unidentified



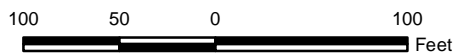
D:\Projects\1\SC\101000\MXD\Treelex_TreeLocations_20210512.mxd

Aerial Source: Esri, Maxar 2020

Trees Proposed for Removal

Exhibit 3

Tree Inventory Report for the Fallbrook Point Project Site, West Hills, California



ATTACHMENT A
TREE DATA SUMMARY

TREE DATA SUMMARY

Tree Tag #	Common Name	Species	# Main Trunks	D.B.H. (in)		Height (ft)	Canopy Diameter (ft)	Health Rating	Aesthetic Rating	Project Impacts	
				All Trunks	Sum of Largest Two Trunks					Removal	Protect in Place
1	Brazilian pepper	<i>Schinus terebinthifolius</i>	9	13.1, 11.7, 11.1, 9.7, 9.5, 9.0, 8.1, 8.0, 7.0	24.8	20	25	4	3	X	
2	Brazilian pepper	<i>Schinus terebinthifolius</i>	6	16.5, 15.1, 12.2, 12.0, 11.6, 10.5	31.6	20	25	4	3	X	
3	Brazilian pepper	<i>Schinus terebinthifolius</i>	1	27.0	27.0	20	25	4	3	X	
4	Brazilian pepper	<i>Schinus terebinthifolius</i>	1	10.9	10.9	15	15	4	4	X	
5	Brazilian pepper	<i>Schinus terebinthifolius</i>	8	10.5, 10.1, 9.5, 9.5, 8.0, 8.0, 7.7, 6.1	20.6	20	25	4	3	X	
6	Brazilian pepper	<i>Schinus terebinthifolius</i>	2	12.5, 9.8	22.3	20	20	3	3		X
7	Brazilian pepper	<i>Schinus terebinthifolius</i>	6	11.1, 9.9, 9.5, 8.0, 7.7, 7.0	21.0	20	25	3	3		X
8	Mexican fan palm	<i>Washingtonia robusta</i>	1	23.0	23.0	50	15	3	3		X
9	Raywood ash	<i>Fraxinus angustifolia</i>	1	8.8	8.8	25	15	3	3		X
10	Mexican fan palm	<i>Washingtonia robusta</i>	1	19.0	19.0	55	15	3	3		X
11	Raywood ash	<i>Fraxinus angustifolia</i>	2	9.1, 6.1	15.2	30	18	3	3		X
12	Raywood ash	<i>Fraxinus angustifolia</i>	2	6.2, 6.0	12.2	20	15	3	3	X	
13	Raywood ash	<i>Fraxinus angustifolia</i>	4	12.2, 9.8, 9.1, 7.7	22.0	40	20	4	3		X
14	Raywood ash	<i>Fraxinus angustifolia</i>	4	6.5, 5.6, 5.1, 3.5	12.1	20	15	3	3	X	
15	Mexican fan palm	<i>Washingtonia robusta</i>	1	19.0	19.0	50	12	3	3	X	
16	carob	<i>Ceratonia siliqua</i>	5	13.1, 12.5, 10.2, 10.0, 9.4	25.6	25	25	3	2	X	
17	carob	<i>Ceratonia siliqua</i>	2	14.2, 9.6	23.8	20	18	3	2	X	
18	carob	<i>Ceratonia siliqua</i>	4	16.2, 12.1, 7.6, 5.1	28.3	25	15	3	2	X	
19	carob	<i>Ceratonia siliqua</i>	13	21.5, 14.1, 12.5, 11.5, 10.0, 10.0, 10.0, 9.5, 9.5, 8.5, 8.5, 8.0, 8.0	35.6	25	25	3	2	X	
20	common catalpa	<i>Catalpa bignonioides</i>	1	23.5	23.5	25	20	3	3	X	
21	Raywood ash	<i>Fraxinus angustifolia</i>	3	10.8, 7.1, 5.2	17.9	25	20	3	3		X
22	Mexican fan palm	<i>Washingtonia robusta</i>	1	16.0	16.0	25	10	3	3		X
23	Raywood ash	<i>Fraxinus angustifolia</i>	2	15.2, 13.7	28.9	30	18	3	3	X	
24	Mexican fan palm	<i>Washingtonia robusta</i>	1	16.0	16.0	35	10	3	3		X
25	Mexican fan palm	<i>Washingtonia robusta</i>	1	18.0	18.0	45	10	3	3		X

TREE DATA SUMMARY

Tree Tag #	Common Name	Species	# Main Trunks	D.B.H. (in)		Height (ft)	Canopy Diameter (ft)	Health Rating	Aesthetic Rating	Project Impacts	
				All Trunks	Sum of Largest Two Trunks					Removal	Protect in Place
26	Mexican fan palm	<i>Washingtonia robusta</i>	1	18.0	18.0	55	12	3	3		X
27	Mexican fan palm	<i>Washingtonia robusta</i>	1	17.0	17.0	40	10	3	3	X	
28	Mexican fan palm	<i>Washingtonia robusta</i>	1	19.0	19.0	40	10	3	3	X	
29	Raywood ash	<i>Fraxinus angustifolia</i>	4	4.8, 4.5, 3.8, 3.1	9.3	25	12	3	2		X
30	Mexican fan palm	<i>Washingtonia robusta</i>	1	22.0	22.0	50	10	3	3		X
31	Mexican fan palm	<i>Washingtonia robusta</i>	1	20.0	20.0	50	10	3	3		X
32	Mexican fan palm	<i>Washingtonia robusta</i>	1	18.0	18.0	50	10	3	3	X	
33	Mexican fan palm	<i>Washingtonia robusta</i>	1	16.0	16.0	50	10	3	3	X	
34	Mexican fan palm	<i>Washingtonia robusta</i>	1	18.0	18.0	50	10	3	3	X	
35	Mexican fan palm	<i>Washingtonia robusta</i>	1	20.0	20.0	50	10	3	3	X	
36	Mexican fan palm	<i>Washingtonia robusta</i>	1	17.0	17.0	50	10	3	3	X	
37	Mexican fan palm	<i>Washingtonia robusta</i>	1	16.0	16.0	50	10	3	3	X	
38	Mexican fan palm	<i>Washingtonia robusta</i>	1	18.0	18.0	50	10	3	3	X	
39	Mexican fan palm	<i>Washingtonia robusta</i>	1	22.0	22.0	50	10	3	3	X	
40	Mexican fan palm	<i>Washingtonia robusta</i>	1	24.0	24.0	50	10	3	3	X	
41	Mexican fan palm	<i>Washingtonia robusta</i>	1	20.0	20.0	50	10	3	3	X	
42	Mexican fan palm	<i>Washingtonia robusta</i>	1	24.0	24.0	50	10	3	3	X	
43	Mexican fan palm	<i>Washingtonia robusta</i>	1	19.0	19.0	50	10	3	3	X	
44	Raywood ash	<i>Fraxinus angustifolia</i>	6	7.5, 7.1, 6.7, 6.2, 5.5, 4.1	14.6	25	20	3	3		X
45	Raywood ash	<i>Fraxinus angustifolia</i>	2	8.8, 5.9	14.7	25	15	3	3		X
46	flowering pear	<i>Pyrus kawakamii</i>	1	11.5	11.5	20	20	3	3	X	
47	Mexican fan palm	<i>Washingtonia robusta</i>	1	22.0	22.0	50	12	3	3	X	
48	Raywood ash	<i>Fraxinus angustifolia</i>	3	4.8, 4.1, 3.5	8.9	20	12	3	2		X
49	unidentified		3	12.1, 10.8, 10.2	22.9	20	20	1	1		X
50	Aleppo pine	<i>Pinus halepensis</i>	1	41.0	41.0	30	30	4	4	X	
51	Mexican fan palm	<i>Washingtonia robusta</i>	1	22.0	22.0	50	12	3	3	X	
52	silk oak	<i>Grevillea robusta</i>	1	17.6	17.6	50	15	4	3		X
53	Aleppo pine	<i>Pinus halepensis</i>	1	16.9	16.9	40	15	4	3	X	
54	Raywood ash	<i>Fraxinus angustifolia</i>	1	14.8	14.8	30	20	3	3	X	
55	carob	<i>Ceratonia siliqua</i>	1	19.5	19.5	20	20	2	2	X	

TREE DATA SUMMARY

Tree Tag #	Common Name	Species	# Main Trunks	D.B.H. (in)		Height (ft)	Canopy Diameter (ft)	Health Rating	Aesthetic Rating	Project Impacts	
				All Trunks	Sum of Largest Two Trunks					Removal	Protect in Place
56	holly oak	<i>Quercus ilex</i>	1	37.5	37.5	40	40	4	4	X	
57	carob	<i>Ceratonia siliqua</i>	1	19.4	19.4	30	20	3	3	X	
58	holly oak	<i>Quercus ilex</i>	2	7.6, 6.2	13.8	20	15	3	3	X	
59	holly oak	<i>Quercus ilex</i>	1	9.6	9.6	20	15	3	3	X	
60	holly oak	<i>Quercus ilex</i>	4	7.0, 3.9, 3.5, 3.0	10.9	25	12	3	3		X
61	Raywood ash	<i>Fraxinus angustifolia</i>	2	7.1, 3.5	10.6	25	15	3	3	X	
62	Raywood ash	<i>Fraxinus angustifolia</i>	4	11.4, 9.1, 6.5, 6.1	20.5	25	15	3	3	X	
63	Raywood ash	<i>Fraxinus angustifolia</i>	6	12.6, 7.1, 6.8, 6.7, 6.0, 5.0	19.7	25	15	3	3		X
64	Raywood ash	<i>Fraxinus angustifolia</i>	3	8.0, 7.1, 6.8	15.1	25	15	3	3		X
65	holly oak	<i>Quercus ilex</i>	1	10.7	10.7	25	20	3	3		X
66	Raywood ash	<i>Fraxinus angustifolia</i>	6	10.9, 9.9, 7.7, 5.8, 5.5, 5.0	20.8	25	20	3	3		X
67	Aleppo pine	<i>Pinus halepensis</i>	1	19.2	19.2	30	20	4	3	X	
68	Aleppo pine	<i>Pinus halepensis</i>	1	27.2	27.2	25	20	3	3	X	
69	Mexican fan palm	<i>Washingtonia robusta</i>	1	17.0	17.0	50	15	3	3	X	
70	carob	<i>Ceratonia siliqua</i>	5	9.6, 9.1, 7.8, 6.3, 6.0	18.7	30	20	3	2	X	
71	common catalpa	<i>Catalpa bignonioides</i>	7	5.2, 4.4, 3.2, 2.4, 2.0, 2.0, 1.0	9.6	20	15	3	2	X	
72	Mexican fan palm	<i>Washingtonia robusta</i>	1	16.0	16.0	50	15	3	3	X	
73	Mexican fan palm	<i>Washingtonia robusta</i>	1	16.0	16.0	50	15	3	3	X	
74	Mexican fan palm	<i>Washingtonia robusta</i>	1	17.0	17.0	50	15	3	3	X	
75	common catalpa	<i>Catalpa bignonioides</i>	1	31.3	31.3	35	25	4	4	X	
76	common catalpa	<i>Catalpa bignonioides</i>	1	8.8	8.8	20	12	3	3	X	
77	juniper	<i>Juniperus sp.</i>	1	21.3	21.3	20	20	4	4		X
78	juniper	<i>Juniperus sp.</i>	1	22.7	22.7	18	20	4	4		X
79	Aleppo pine	<i>Pinus halepensis</i>	1	26.4	26.4	40	30	4	4	X	
80	Mexican fan palm	<i>Washingtonia robusta</i>	1	17.0	17.0	50	15	3	3	X	
81	flowering pear	<i>Pyrus kawakamii</i>	1	11.4	11.4	18	15	2	2	X	
82	Chinese elm	<i>Ulmus parviflora</i>	1	11.1	11.1	25	20	3	3	X	
83	Chinese elm	<i>Ulmus parviflora</i>	1	10.7	10.7	25	20	4	3	X	

TREE DATA SUMMARY

Tree Tag #	Common Name	Species	# Main Trunks	D.B.H. (in)		Height (ft)	Canopy Diameter (ft)	Health Rating	Aesthetic Rating	Project Impacts	
				All Trunks	Sum of Largest Two Trunks					Removal	Protect in Place
84	pecan	<i>Carya illinoensis</i>	1	9.1	9.1	20	20	4	3	X	
85	American sweetgum	<i>Liquidambar styraciflua</i>	1	12.6	12.6	40	20	4	3	X	
86	Chinese elm	<i>Ulmus parviflora</i>	1	10.0	10.0	25	20	4	3	X	
87	Chinese elm	<i>Ulmus parviflora</i>	1	10.5	10.5	25	20	4	3	X	
88	Chinese elm	<i>Ulmus parviflora</i>	1	8.8	8.8	25	20	4	3	X	
89	Chinese elm	<i>Ulmus parviflora</i>	1	8.4	8.4	25	20	4	3	X	
90	Chinese elm	<i>Ulmus parviflora</i>	1	8.7	8.7	25	20	4	3	X	
91	Chinese elm	<i>Ulmus parviflora</i>	1	9.2	9.2	25	20	4	3	X	
92	Chinese elm	<i>Ulmus parviflora</i>	1	8.2	8.2	25	20	4	3	X	
93	flowering pear	<i>Pyrus kawakamii</i>	1	15.6	15.6	25	20	4	3	X	
94	Chinese elm	<i>Ulmus parviflora</i>	1	9.9	9.9	25	20	4	3	X	
95	Chinese elm	<i>Ulmus parviflora</i>	1	10.3	10.3	25	20	4	3	X	
96	Chinese elm	<i>Ulmus parviflora</i>	1	11.1	11.1	25	20	4	3	X	
97	glossy privet	<i>Ligustrum lucidum</i>	4	9.1, 6.2, 5.4, 4.8	15.3	25	20	4	3	X	
98	crape myrtle	<i>Lagerstroemia indica</i>	8	6.5, 6.0, 5.5, 5.0, 4.4, 4.0, 3.5, 3.5	12.5	25	15	4	3	X	
99	crape myrtle	<i>Lagerstroemia indica</i>	7	6.2, 6.0, 4.5, 4.2, 3.5, 3.0, 2.0	12.2	25	15	4	3	X	
100	crape myrtle	<i>Lagerstroemia indica</i>	7	6.0, 5.1, 5.0, 4.5, 4.5, 4.0, 3.0	11.1	25	15	4	3	X	
101	glossy privet	<i>Ligustrum lucidum</i>	1	15.1	15.1	25	25	4	3	X	
102	glossy privet	<i>Ligustrum lucidum</i>	1	8.2	8.2	20	15	3	4	X	
103	Chinese elm	<i>Ulmus parviflora</i>	1	17.5	17.5	30	25	4	3	X	
104	flowering pear	<i>Pyrus kawakamii</i>	1	15.8	15.8	25	20	4	4		X
105	Aleppo pine	<i>Pinus halepensis</i>	1	22.2	22.2	50	20	4	4	X	
106	Aleppo pine	<i>Pinus halepensis</i>	1	23.8	23.8	50	20	4	4	X	
107	Aleppo pine	<i>Pinus halepensis</i>	1	20.4	20.4	50	20	4	4	X	
108	Aleppo pine	<i>Pinus halepensis</i>	1	22.1	22.1	50	20	4	4	X	
109	carob	<i>Ceratonia siliqua</i>	1	29.2	29.2	30	20	4	4	X	
110	Chinese elm	<i>Ulmus parviflora</i>	1	16.2	16.2	30	20	4	4	X	
111	blue gum	<i>Eucalyptus globulus</i>	3	13.1, 12.6, 11.2	25.7	60	20	4	4	X	

TREE DATA SUMMARY

Tree Tag #	Common Name	Species	# Main Trunks	D.B.H. (in)		Height (ft)	Canopy Diameter (ft)	Health Rating	Aesthetic Rating	Project Impacts	
				All Trunks	Sum of Largest Two Trunks					Removal	Protect in Place
112	Brisbane box	<i>Lophostemon confertus</i>	1	14.7	14.7	30	20	4	4		X
113	Aleppo pine	<i>Pinus halepensis</i>	1	32.9	32.9	60	35	5	5		X
114	London plane	<i>Platanus X hispanica</i>	1	8.9	8.9	20	15	4	4	X	
115	London plane	<i>Platanus X hispanica</i>	1	9.9	9.9	20	15	3	4	X	
116	London plane	<i>Platanus X hispanica</i>	1	9.9	9.9	20	15	4	4	X	
117	London plane	<i>Platanus X hispanica</i>	1	9.0	9.0	20	15	4	4	X	
118	London plane	<i>Platanus X hispanica</i>	1	8.2	8.2	20	15	4	4	X	
119	London plane	<i>Platanus X hispanica</i>	1	8.0	8.0	20	15	4	4	X	
120	London plane	<i>Platanus X hispanica</i>	1	9.7	9.7	35	20	4	4	X	
121	London plane	<i>Platanus X hispanica</i>	1	10.5	10.5	20	20	4	4	X	
122	London plane	<i>Platanus X hispanica</i>	1	8.4	8.4	20	15	4	4	X	
123	London plane	<i>Platanus X hispanica</i>	1	10.6	10.6	20	20	4	4	X	
124	London plane	<i>Platanus X hispanica</i>	1	11.8	11.8	25	20	4	4	X	
125	London plane	<i>Platanus X hispanica</i>	1	10.2	10.2	20	20	4	4	X	
126	London plane	<i>Platanus X hispanica</i>	1	9.7	9.7	20	15	4	4	X	
127	London plane	<i>Platanus X hispanica</i>	1	10.9	10.9	20	15	4	4	X	
128	Chinese flame tree	<i>Koelreuteria bipinnata</i>	1	11.8	11.8	20	15	4	4		X
129	Chinese flame tree	<i>Koelreuteria bipinnata</i>	1	11.5	11.5	25	15	4	4	X	
130	Chinese flame tree	<i>Koelreuteria bipinnata</i>	1	8.9	8.9	20	15	4	4	X	
131	Chinese flame tree	<i>Koelreuteria bipinnata</i>	1	8.3	8.3	20	15	4	4	X	
132	Chinese flame tree	<i>Koelreuteria bipinnata</i>	1	11.8	11.8	20	15	4	4		X
133	Chinese flame tree	<i>Koelreuteria bipinnata</i>	1	8.5	8.5	20	15	4	4	X	
134	London plane	<i>Platanus X hispanica</i>	1	8.7	8.7	20	15	4	4	X	
135	Chinese flame tree	<i>Koelreuteria bipinnata</i>	1	10.1	10.1	20	15	4	4	X	
136	Chinese flame tree	<i>Koelreuteria bipinnata</i>	1	12.2	12.2	25	15	4	4	X	
137	Chinese flame tree	<i>Koelreuteria bipinnata</i>	1	8.5	8.5	25	15	4	4	X	
138	Chinese flame tree	<i>Koelreuteria bipinnata</i>	1	13.3	13.3	25	15	4	4	X	
139	Chinese flame tree	<i>Koelreuteria bipinnata</i>	1	8.6	8.6	20	10	2	2	X	
140	Chinese flame tree	<i>Koelreuteria bipinnata</i>	1	11.4	11.4	25	15	4	4	X	
141	Chinese flame tree	<i>Koelreuteria bipinnata</i>	1	11.7	11.7	25	15	4	4	X	
142	Chinese flame tree	<i>Koelreuteria bipinnata</i>	1	8.8	8.8	20	15	4	4	X	



TREE DATA SUMMARY

Tree Tag #	Common Name	Species	# Main Trunks	D.B.H. (in)		Height (ft)	Canopy Diameter (ft)	Health Rating	Aesthetic Rating	Project Impacts	
				All Trunks	Sum of Largest Two Trunks					Removal	Protect in Place
143	Chinese flame tree	<i>Koelreuteria bipinnata</i>	1	10.2	10.2	25	15	4	4	X	
144	London plane	<i>Platanus X hispanica</i>	1	8.1	8.1	20	15	4	4	X	
145	London plane	<i>Platanus X hispanica</i>	1	9.5	9.5	20	15	4	4	X	
146	London plane	<i>Platanus X hispanica</i>	1	8.0	8.0	20	15	4	4	X	
147	London plane	<i>Platanus X hispanica</i>	1	10.2	10.2	25	15	4	3	X	
148	London plane	<i>Platanus X hispanica</i>	1	9.5	9.5	20	15	4	4	X	
149	London plane	<i>Platanus X hispanica</i>	1	9.7	9.7	20	15	4	4	X	
150	London plane	<i>Platanus X hispanica</i>	1	8.5	8.5	20	15	4	4	X	
151	London plane	<i>Platanus X hispanica</i>	1	8.7	8.7	20	15	4	4	X	
152	London plane	<i>Platanus X hispanica</i>	1	8.1	8.1	20	15	4	4	X	
153	London plane	<i>Platanus X hispanica</i>	1	8.5	8.5	20	15	4	4	X	
154	London plane	<i>Platanus X hispanica</i>	1	8.7	8.7	20	15	4	4	X	
155	London plane	<i>Platanus X hispanica</i>	1	8.8	8.8	20	15	4	4	X	
156	London plane	<i>Platanus X hispanica</i>	1	8.5	8.5	20	15	4	4	X	
157	London plane	<i>Platanus X hispanica</i>	1	10.1	10.1	20	15	4	4	X	
158	London plane	<i>Platanus X hispanica</i>	1	8.4	8.4	20	15	4	4	X	
159	London plane	<i>Platanus X hispanica</i>	1	10.2	10.2	25	15	4	4	X	
160	London plane	<i>Platanus X hispanica</i>	1	10.5	10.5	25	15	4	4	X	
161	London plane	<i>Platanus X hispanica</i>	1	9.0	9.0	20	15	4	4	X	
162	London plane	<i>Platanus X hispanica</i>	1	11.2	11.2	25	20	4	4	X	
163	London plane	<i>Platanus X hispanica</i>	1	8.5	8.5	20	15	4	4	X	

dbh: diameter at breast height; ft: feet.

Aesthetics/Health Rating: 1=Very Poor, 2=Poor, 3=Fair, 4=Good, and 5=Excellent

ATTACHMENT B
SITE PHOTOGRAPHS

 Project Boundary
 Photo Locations



D:\Projects\1\SCI\010100\MXD\Tree\ex_PhotoLocations_20210512.mxd

Aerial Source: Maxar, ESRI 2020

Photo Locations

Exhibit B-1

Tree Inventory Report for the Fallbrook Point Project Site, West Hills, California

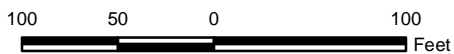




Photo Location 1, facing northeast. April 30, 2021. View of center of project site.



Photo Location 1, facing southeast. April 30, 2021. View of southern portion of project site.

D:\Projects\1SCI\0100\Graphics\exB2_SitePhotos_20210512.ai

Site Photos

Tree Inventory Report for the Fallbrook Point Project Site, West Hills, California

Exhibit B-2





Photo Location 2, facing northwest. April 30, 2021. View of center of project site.



Photo Location 2, facing northeast. April 30, 2021. View of eastern portion of project site.

D:\Projects\1SCI\0100\Graphics\exB3_SitePhotos_20210512.ai

Site Photos

Tree Inventory Report for the Fallbrook Point Project Site, West Hills, California

Exhibit B-3





Photo Location 3, facing northwest. April 30, 2021. Exterior view of southern project boundary.



Photo Location 4, facing southwest. April 30, 2021. View of center of project site.

D:\Projects\1SCI\0100\Graphics\exB4_SitePhotos_20210512.ai

Site Photos

Exhibit B-4

Tree Inventory Report for the Fallbrook Point Project Site, West Hills, California

